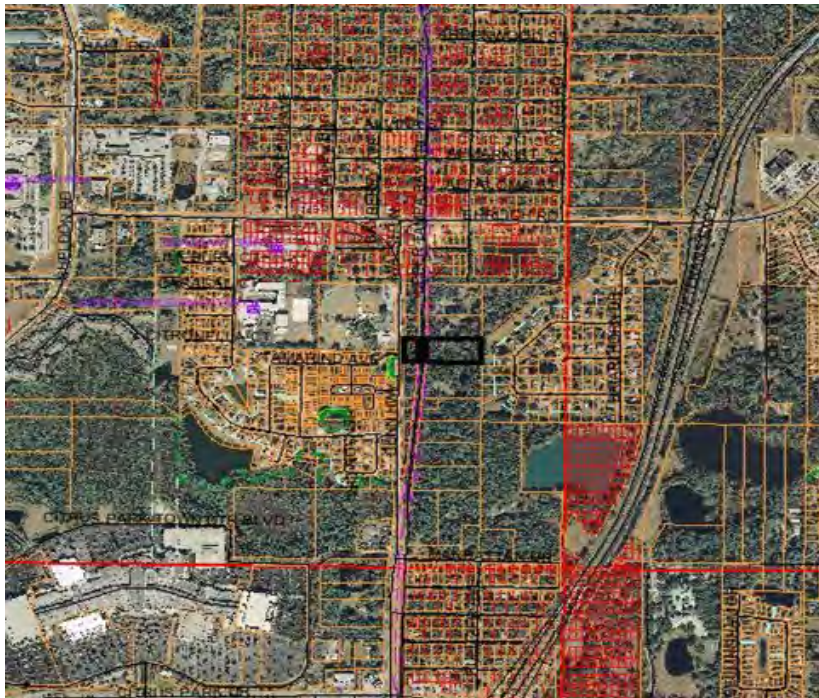


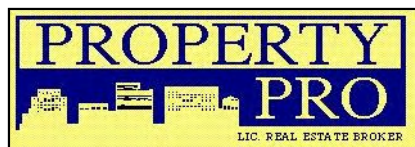
# NW Tampa - Citrus Park Gunn Highway at Upper Tampa Bay Trail Tampa, FL 33625



## LAND FOR SALE 2.92 Acres



- Size: 2.92 Acres
- Price: \$300,100
- Zoned Residential with land use overlay for 12 Multi Family Units per Acre; can also be Business Professional Office.
- Great location; just two blocks north of the Westfield Shopping Town at Citrus Park.
- Parcel is east and west of the Upper Tampa Bay Trail and provides easy access to all Major arteries to include the Veterans Expressway (589 toll road).
- Traffic Count: 25,098 VPD



<http://www.propertypro.com>

332 South Plant Ave.  
Tampa, FL 33606-2346  
(813) 835-7747 Phone  
(813) 839-3299 Fax  
(813) 334-8034 Cell

### 2010 Demographics

	<u>3 Miles</u>	<u>5 Miles</u>	<u>7 Miles</u>
<b>Population</b>	63,386	182,975	306,510
<b>Average HH Income</b>	\$91,018	\$88,141	\$80,243
<b>Households</b>	23,593	71,246	122,113

CONTACT:

**Myra Croft**, Licensed Real Estate Associate  
E-mail: [Myra@PropertyPro.com](mailto:Myra@PropertyPro.com)

